



Methodist  
Senior Services  
Celebration. Innovation. Hope.

## Riggs Manor Retirement Community

### The Green House<sup>®</sup> Homes



*The Green House<sup>®</sup> Homes are  
dedicated to Memory Support.*

*The care is designed to create a safe  
and comfortable environment for  
residents needing assistance with daily  
living due to a dementia diagnosis.*

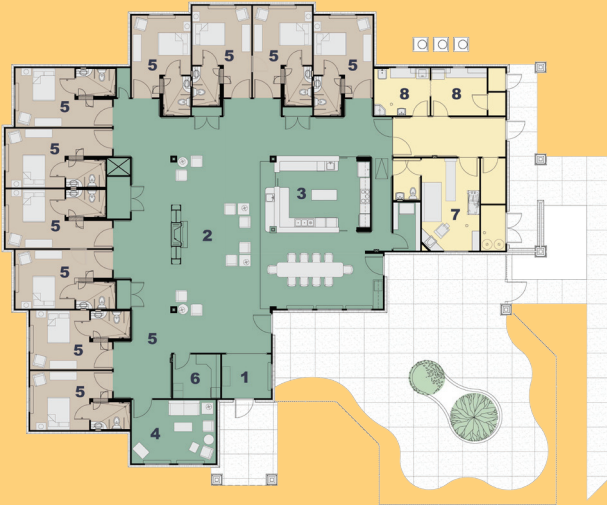
*Our highly-trained staff, individualized  
care and recreational plans are  
customized to the resident's  
strengths and limitations.*

**2300 Seven Springs Road  
Raymond, MS 39154**

# The Green House® Homes

Offers Memory Support in a home designed for 10 elders with private rooms, baths, all surrounding a common living space for dining, activities, socializing and engaging others in a family-like atmosphere.

- Unfurnished private bedrooms
- Fully accessible private bath
- Services
  - 3 well-balanced meals a day
  - Medication monitoring
  - Bathing & grooming assistance
  - Housekeeping & laundry



## Riggs Manor Retirement Community

*...serving older adults in  
the spirit of Christian love.*

**(601) 857-5011**

[www.mss.org/riggsmanor](http://www.mss.org/riggsmanor)

